

# Cancer Assessment Report

OHSU Knight Cancer Institute | Community Partnership Program

2021-2022



Cindy Vargas & Aly Weiss, Heath Strategists, CCHD  
CROOK COUNTY HEALTH DEPARTMENT

# Table of Contents

<b>INTRODUCTION</b> .....	<b>2</b>
MISSION, VISION, AND VALUES .....	2
<b>EXECUTIVE SUMMARY</b> .....	<b>2</b>
BACKGROUND .....	2
WHAT IS CANCER? .....	2
RISK FACTORS FOR CANCER .....	2
METHODOLOGY .....	2
<b>DEMOGRAPHICS</b> .....	<b>3</b>
COMMUNITY DEFINED .....	3
<b>SUMMARY OF KEY FINDINGS</b> .....	<b>7</b>
<b>ACCESS TO CANCER RESOURCES IN THE REGION</b> .....	<b>9</b>
MEDICAL PROFESSIONALS SPECIALIZING IN CANCER-RELATED TREATMENT .....	9
SCREENING SERVICES .....	9
CANCER FACILITIES .....	10
IMAGING SERVICES .....	11
SURVIVORSHIP RESOURCES .....	11
<b>CONCLUSION</b> .....	<b>12</b>
<b>RESOURCES</b> .....	<b>13</b>
CANCER CENTERS .....	13
IMAGING CENTERS .....	13
<b>REFERENCES</b> .....	<b>13</b>

## Introduction

### Mission, Vision, and Values

The vision of Crook County Health Department is “Health and safety for everyone in Crook County” and the mission is “Crook County Public Health strives to provide fair opportunity for those in our community to achieve their full health potential.” As a public health department, the aim is to improve and prevent poor health outcomes for those living in Crook County. The Prevention and Health Promotion team uses evidence-based prevention strategies and health promotion to empower people to take control of their health to prevent disease and improve quality of life.

## Executive Summary

### Background

In 2019 Crook County Public Health (CCPH) applied for funding through OHSU Knight Cancer Institute’s CPP funding opportunity (RFP) to understand Crook County’s cancer needs. The award was 10,000 dollars and will allow CCPH to complete a cancer-related health assessment to prepare for Community Partnership Program (CPP) Tier 2 funding.

### What is cancer?

[Cancer](#)<sup>i</sup> is a disease in which cells in the body grow uncontrollably and spread to other regions of the body.

### Risk factors for cancer

It is important to understand what are considered cancer risk factors. A cancer risk factor is anything that can increase a person’s chance of getting cancer. Most risk factors do not directly cause cancer and some people with several factors may never develop cancer.

General [risk factors for cancer](#)<sup>ii</sup> include older age, personal or family history of cancer, using tobacco, obesity, alcohol, viral infections, specific chemicals, and exposure to radiation including ultraviolet radiation from the sunlight.

For more information about cancer risk factors, prevention and more visit the [CDC website](#)<sup>iii</sup>.

## Methodology

An extensive review of existing data and collection of community partnership information was conducted. The process began by compiling, reviewing, and analyzing secondary information already available including information at the local and state level of populations health. Once

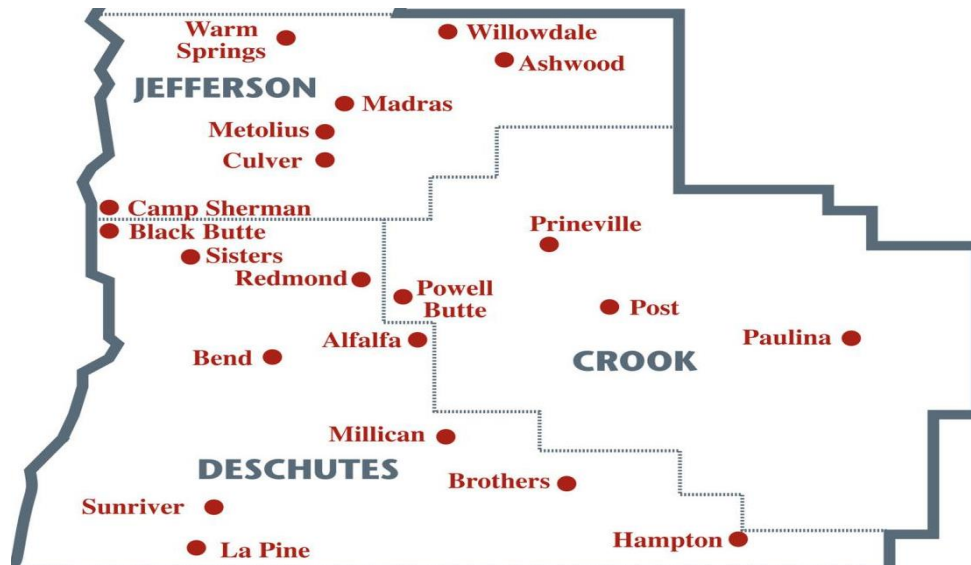
the initial analysis of secondary data was complete, the process continued by connecting with community partners to see if there were any resources left out.

## Demographics

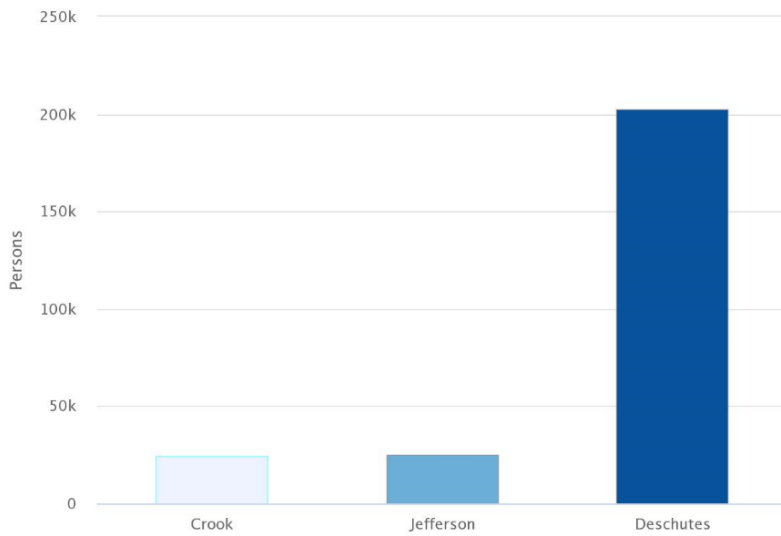
The demographics of Crook County are an essential component to understanding the social and economic conditions that influence the health status of residents and the overall population. These are also referred to as social determinants of health.

## Community Defined

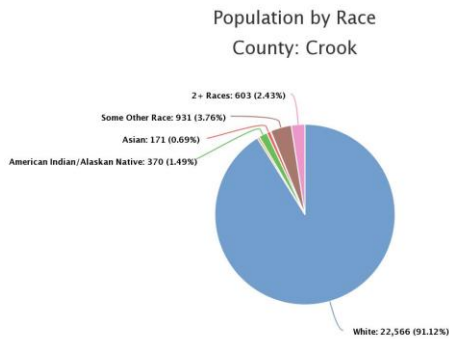
Crook County is one of the 36 counties in the state of Oregon. The towns that make up Crook County are Prineville, Powell Butte, Post, and Paulina. The county seat and only incorporated city is Prineville.



According to the [United States Census Bureau](#)<sup>iv</sup>, Crook County is an area of 2,979.09 miles of land. The population of Crook County is 24,764 persons according to the 2020 Census. Crook County's population has grown by 18.05% since the 2010 census.

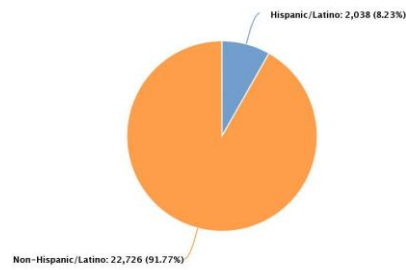


More than 91 percent of Crook’s population is classified as White. The other major group in Crook County is the Hispanic/Latino population, which falls at a little over 8 percent.



Claritas, 2021. [www.centraloregonhealthdata.org](http://www.centraloregonhealthdata.org)

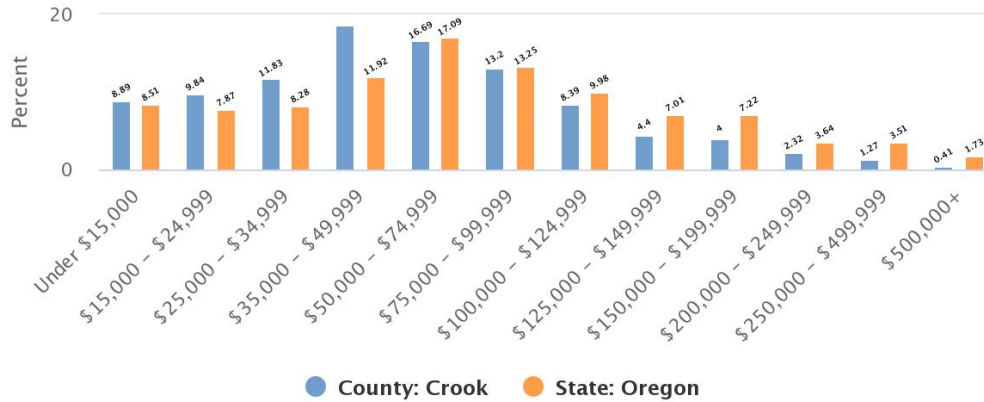
Population by Ethnicity  
County: Crook



Claritas, 2021. [www.centraloregonhealthdata.org](http://www.centraloregonhealthdata.org)

According to the United States Census Bureau, the median household income for Crook County in 2019 was \$49,006. 9.79 percent, or 713 families, living in Crook County fall below the poverty line.

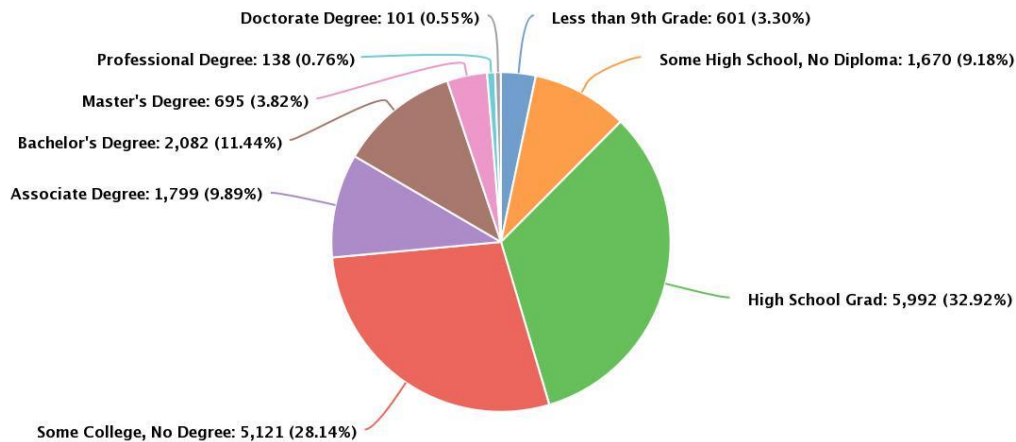
## Households by Income County: Crook



Claritas, 2021. [www.centraloregonhealthdata.org](http://www.centraloregonhealthdata.org)

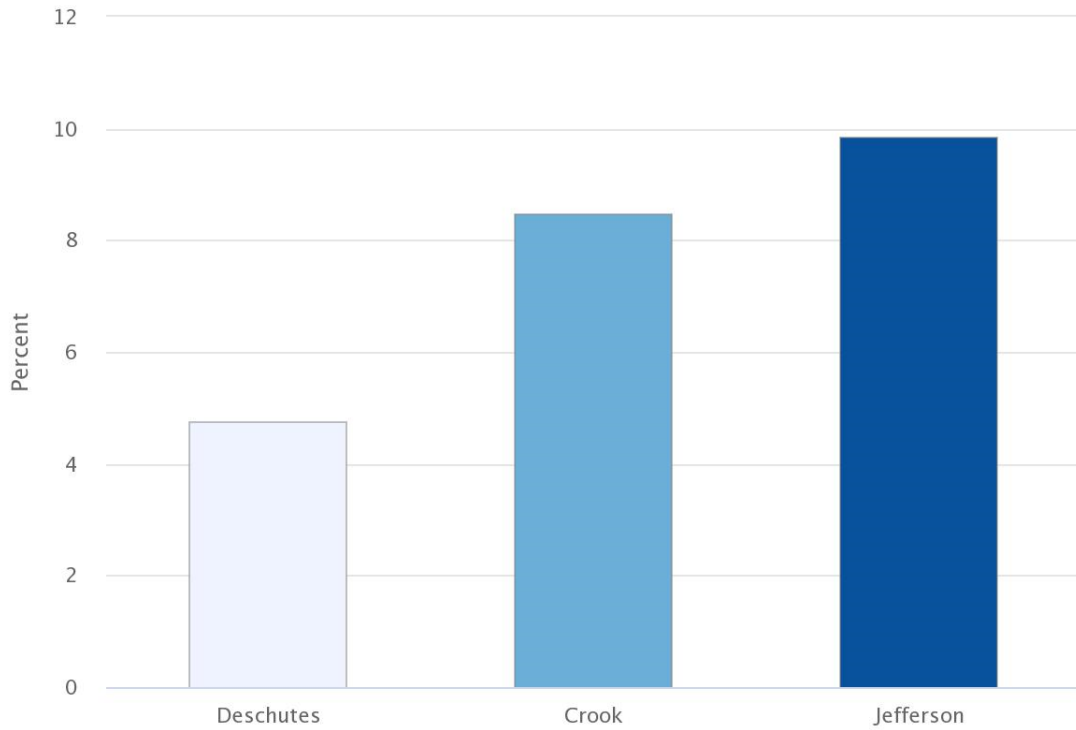
32.92 percent of Crook’s population of 25 years and older have graduated high school, while 28.14 percent have some college education with no degree.

## Population 25+ by Educational Attainment County: Crook



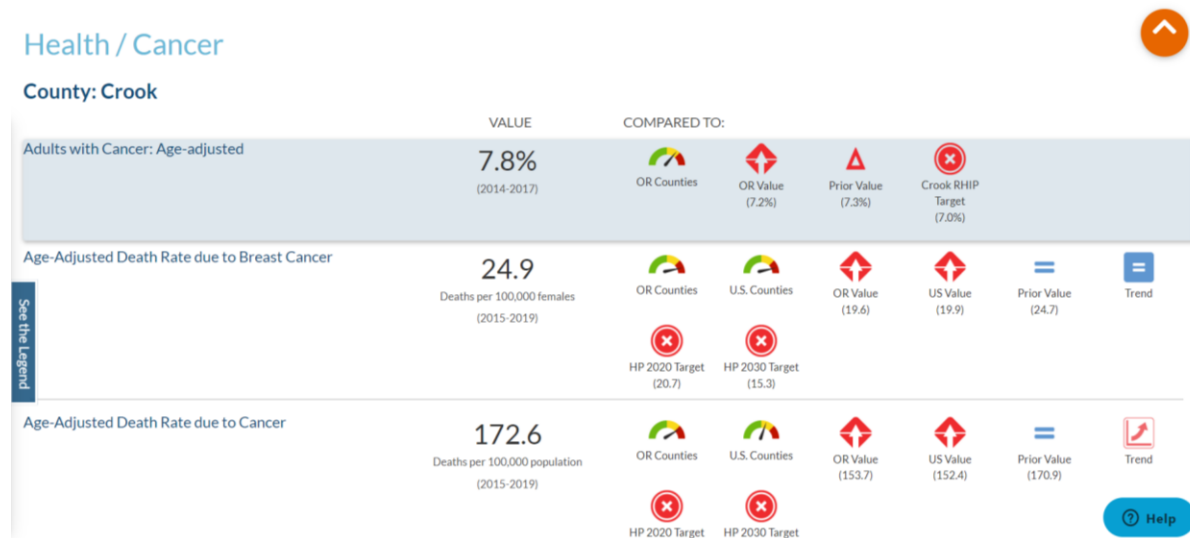
Claritas, 2021. [www.centraloregonhealthdata.org](http://www.centraloregonhealthdata.org)

8.47 percent of Crook's 16 years and older population is unemployed. Oregon's state unemployment rate is 5.14 percent. In comparison, Crook has a higher percentage of unemployed people than the state of Oregon as a whole.

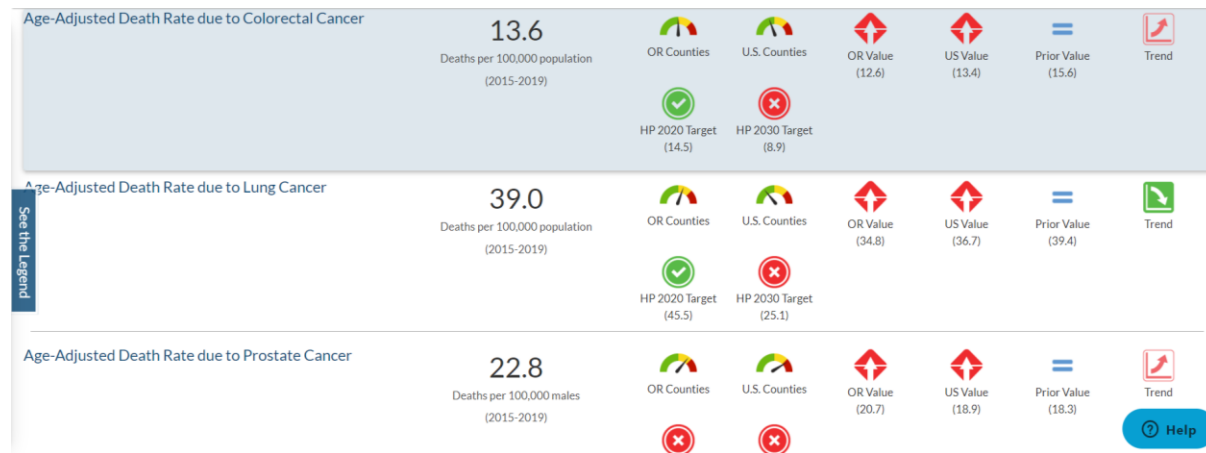


## Summary of key findings

An analysis of already existing data from Central Oregon Health Data Dashboard was compiled and reviewed. This data included information from the local and state levels of population health. Crook County data was identified and compared to other Oregon and United States counties.

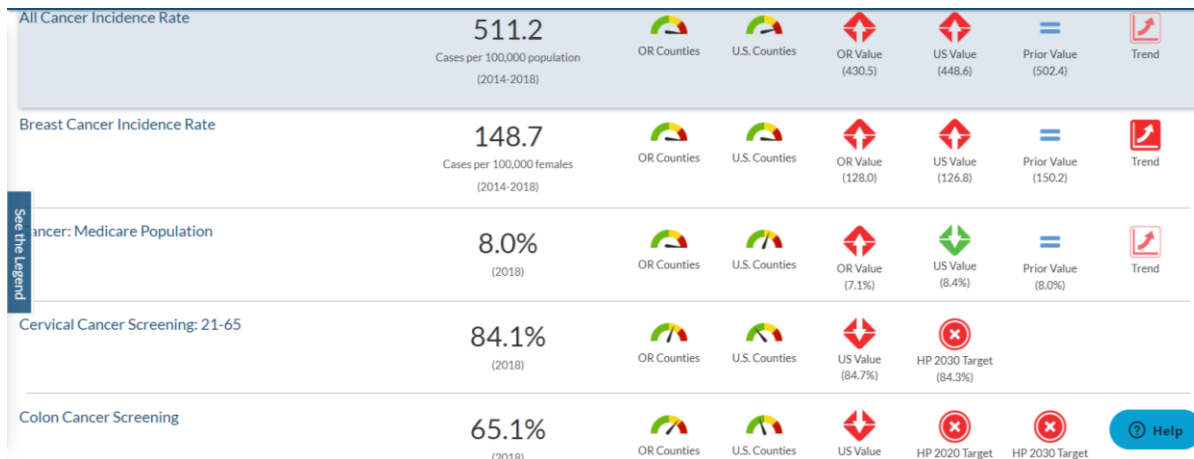


Between the 2015 – 2019 period there have been 172.6 deaths per-100,000 population in Crook County due to cancer. Compared to other United States counties, Crook is in the second-worst quartile of all United States counties.



From 2015 to 2019 there have been 39.0 deaths per-100,000 population in Crook County due to lung cancer. In comparison to other Oregon counties, Crook is in the second-worst quartile.





148.7 cases per-100,000 females in Crook County were diagnosed with breast cancer between the years of 2014-2018. Compared to both OR and United States counties, Oregon Value lands in the worst quartile.



The most recent data on the Central Oregon Health Data dashboard also shows that there is an upward trend on cancer incidence rates for both colorectal cancer and oral cavity and pharynx cancer in Crook County.



To view these dashboards in full, please visit [Central Oregon Health Data](#).

## Access to Cancer Resources in the Region

In part, the project aimed to identify what resources were available for procedures, treatment, and survivorship. In addition to identifying the available resources in Crook County, Crook County Health Department also partnered with Crook County Geographic Information Systems (GIS) to create a map that represents the distance and travel time to facilities in the region.

## Medical Professionals Specializing in Cancer-Related Treatment

The only hospital in Crook County is St. Charles Prineville. At St. Charles Prineville, there are no medical professionals who specialize in oncology. Additionally, there are no visiting specialists for oncology.

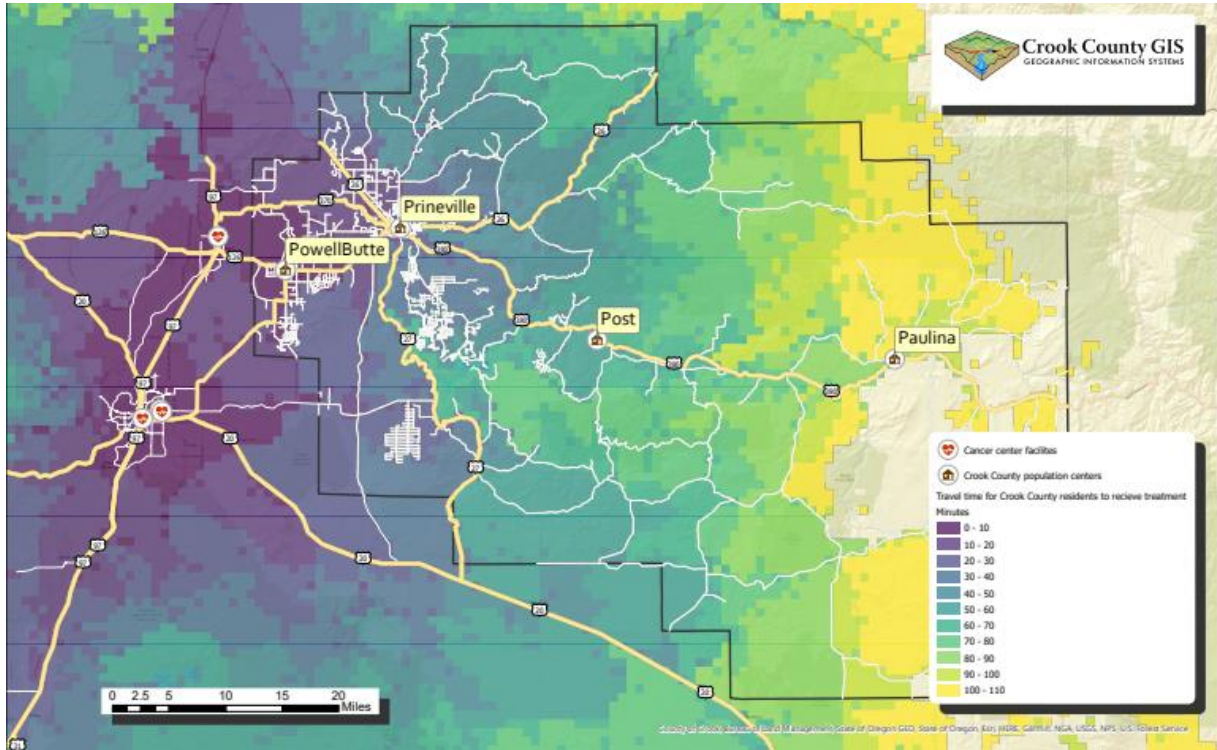
## Screening Services

In Crook County, all primary care providers (PCP's) can do breast exams and can order mammograms, fecal occult blood testing, Cologuard testing, and colonoscopies through St. Charles Health System. Screening colonoscopy referrals require an appointment with the general surgeon's office and the procedures are only done at the hospital. These procedures often require prior authorization with the patient's insurance. Patients are sent to St. Charles in Redmond or Bend for thyroid testing (thyroid FNAs or core BX) as St. Charles Prineville has extremely limited availability for thyroid testing. Thyroid testing also requires a referral to general surgery for a consult in addition to testing.

Skin cancer can be detected through PCP-performed skin biopsies, but most patients are referred out to a dermatologist. There are no dermatologists in Crook County. St. Charles Prineville, Mosaic Medical, and Crook County Health Department provide cervical cancer screenings through routine PAP smears. They do not perform breast MRI's (Magnetic Resonance Imaging). If a PCP finds a lump or other mass during a screening breast exam, the patient can be referred to the general surgeon in Prineville, but if they are unable to perform the procedure, they are sent to St. Charles Redmond or Bend. In summary, Crook County has basic screening services, but patients are referred to care outside of the county if results require further testing or surgery.

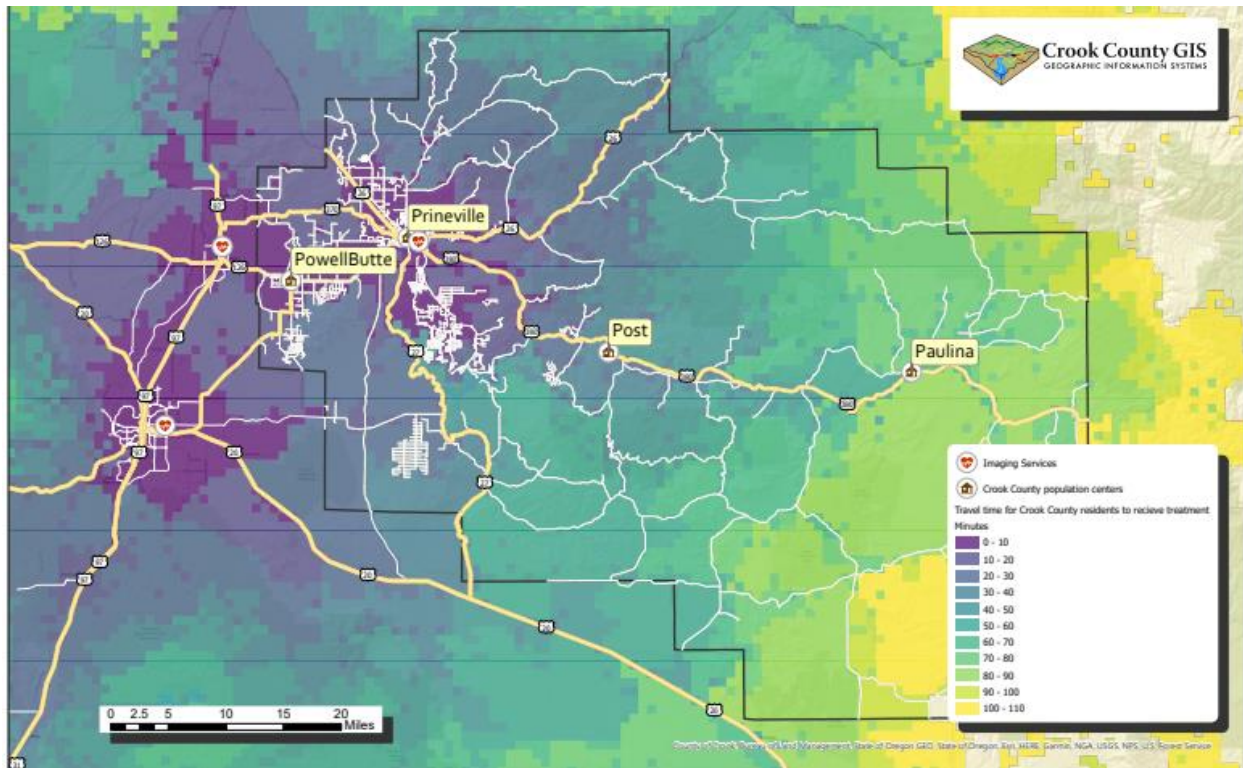
## Cancer Facilities

The travel time from Paulina to the nearest cancer center facility is one hour and twenty-nine minutes to St. Charles Cancer Center in Redmond. Often to receive treatment and care Crook County residents must travel outside of their county.



## Imaging Services

The travel time from Paulina to the nearest imaging service facility is one hour and four minutes to St. Charles Prineville.



## Survivorship Resources

Currently there are no survivorship resources active in the Crook County community. The Prineville Cancer Prayer Bag group is active on Facebook and receives requests to create prayer bags for individuals who are diagnosed with cancer through a church group in the Crook County community. In Deschutes County, there are multiple support groups which include local support for women with cancer, Cancer with Compassion (which meets virtually), Sisters Support Group, and a thyroid cancer support group. Additionally, the Cancer Hope Network provides individual confidential support to anyone that has been affected by cancer throughout the nation. Oncology massage therapists are also available to people with general or specific types of cancer in Bend, with one therapist that works in Redmond.

## Conclusion

Crook County Health Department conducted this assessment to analyze cancer-related needs in the community. The goal of the project was to identify the cancer resources currently available, assess which types of cancer are most prevalent in Crook County and discern which populations are impacted the most.

The analysis from this assessment allowed us to conclude that there is need for cancer-related resources in the county. Crook County lands in the second worst quartile in comparison to other counties in terms of cancer deaths and incidences. The data collected shows an upward trend on cancer incidence rates for both colorectal cancer, oral cavity, and pharynx cancer in Crook County.

There are no medical professionals in Crook County that specialize in oncology. The screening services that are offered in Crook County are basic and many patients are referred to outside care if a lump or mass has been detected. The most common cancer treatment and imaging facilities are outside of Crook County and can be more than an hour away.

Additionally, there are no survivorship groups or resources within Crook County for individuals and their loved ones to get support either during or after cancer diagnosis, treatment, and/or recovery. This information supports that there is a need for preventative work, imaging & diagnostic services, treatment facilities, and survivorship resources within Crook County.

## Resources

### Cancer Centers

St. Charles Cancer Center Bend 2500 NE Neff Rd, Bend, OR 97701

Cascade Cancer Care 403 NE Franklin Ave, Bend, OR 97701

Oncology At Bend Memorial Clinic 1460 NE Medical Center Drive, #180 Bend, Oregon 97707

St. Charles Cancer Center 1541 NW Canal Blvd, Redmond, OR 97756

### Imaging Centers

Redmond Imaging Center 1531 NW Canal Blvd, #100 Redmond, OR 97756

CORA Imaging Center 1460 NE Medical Center Drive, #180 Bend, Oregon 97701

St. Charles Prineville Imaging Services 384 SE Combs Flat Rd. Prineville, OR 97754

## References

---

<sup>i</sup> <https://www.cancer.gov/about-cancer/understanding/what-is-cancer>

<sup>ii</sup> <https://www.cancer.net/navigating-cancer-care/prevention-and-healthy-living/understanding-cancer-risk>

<sup>iii</sup> <https://www.cdc.gov/cancer/index.htm>

<sup>iv</sup> <https://www.census.gov/quickfacts/fact/table/crookcountyoregon,US/MAN450212>

<sup>v</sup> <https://www.centraloregonhealthdata.org/indicators/index/indicatorsearch?module=indicators&controller=index&action=indicatorsearch&doSearch=1&i=&l=2266&t%5B%5D=109&primaryTopicOnly=&subgrouping=1&card=0&handpicked=0&resultsPerPage=150&showComparisons=1&showOnlySelectedComparisons=&showOnlySelectedComparisons=1&grouping=1&ordering=1&sortcomp=0&sortcompIncludeMissing=>